



Product Range

STONEWARE

mvtec...

dekortec...

CLINKER TILES

ARGENOL

Das Reinigungsprogramm für Ihre Bodenfliesen







STONEWARE

STONEWARE – Colours and Surfaces 04 / 05

STONEWARE – Fine grained 06 / 07

STONEWARE – Fine grained, Coarse grained/Dekortec 08 / 09

STONEWARE – Accessory tiles 10 / 11

CLINKER TILES

CLINKER TILES – Colours and Surfaces 12 / 13

CLINKER TILES – Accessory tiles 14 / 15

TECHNICAL INFORMATION

KERASIG / ARGENOL 16 / 17

SLIP RESISTANCE – BGR 181 18 - 21

PRODUCT FEATURES / SECTIONAL DRAWINGS 22 / 23

Quality is our priority – We will happily provide test certificates for your desired product.



Stoneware manufactured by Argelith conforms to CE regulations.



Reclay



COLOURS and COLOURCODES

FINE GRAINED



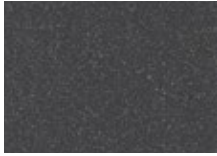
Light grey 200



Dark grey 210



Titanium grey 220



Anthracite 230



Beige 300



Arkona white 310



Sand yellow 400



Cream yellow 410

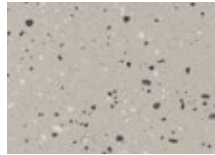
COARSE GRAINED



Cora 600



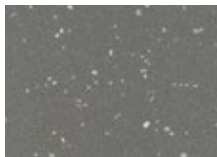
Katerina 602



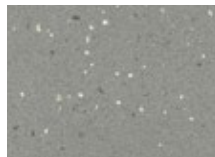
Gitta 610



Tina 611



Tessa 613



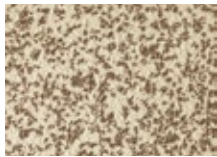
Miha 614



Dehner 606



Atlanta 250



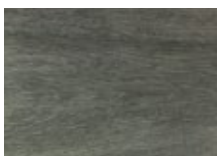
Grey porphy 251

DEKORTEC



Galaxyit 730

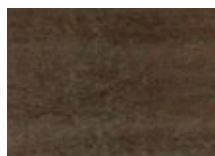
WOOD DESIGN



Larch 722



Oak Wood 726



Walnut 727

SURFACES

R 9/R 10

R11/R 12

R 12/V 04
R 12/V 06

R 13/V 08

R 13/V 10



		Thick-ness	Smooth	Security	Nopped profile	
CARRÉE SERIES	Square 198 x 198	Arkona white	9	R 9/R 10		
			15	R 10/R 11	R 12	R 12 / V 06
			18	R 10/R 11		
		Beige	9	R 9/R 10		
			15	R 10/R 11	R 12	R 12 / V 06
			18	R 10/R 11		
		Light grey	9	R 9/R 10		
			15	R 10/R 11	R 12	R 12 / V 06
			18	R 10/R 11		
		Dark grey	15	R 10/R 11	R 12	R 12 / V 06
			18	R 10/R 11		
		Titanium grey	15	R 10/R 11	R 12	R 12 / V 06
	18		R 10/R 11			
	Cream yellow	15	R 10/R 11	R 12	R 12 / V 06	
		18	R 10/R 11			
	Anthracite	9	R 9/R 10			
		15	R 10/R 11	R 12	R 12 / V 06	
		18	R 10/R 11	R 12	R 12 / V 06	
	Square 298 x 298	Beige	12	R 9/R 10/R 11		
			15	R 9/R 10/R 11		
		Light grey	12	R 9/R 10/R 11		
			15	R 9/R 10/R 11		
		Dark grey	12	R 9/R 10/R 11		
			15	R 9/R 10/R 11		
Titanium grey		12	R 9/R 10/R 11			
		15	R 9/R 10/R 11			
Anthracite		12	R 9/R 10/R 11			
		15	R 9/R 10/R 11			

Additional colours/formats available upon request.



Arkona white



Beige



Light grey



Dark grey



Titanium grey



Cream yellow



Anthracite

Material requirements table	Format	Thick-ness	Material requirements*	Contents Pieces/Package	Contents sqm/Pallet	Weight in	
			including joints Pieces per sqm			kg/sqm	kg/Pallet
	198 x 198	9	25	22	52,80	20	1.056
		15	25	13	31,20	33,5	1.045
		18	25	11	26,40	40	1.056
	298 x 298	12	11	11	40,00	27,5	1.100
		15	11	9	32,73	33	1.080

*Requirement with normal grouting. With a „groutless“ installation (Vibration) the requirement will increase slightly.

		Thickness	Smooth	Security	Nopped profile	Star profile	Security Plus		
CLASSIC SERIES	Rectangular 198 x 98	Arkona white	15	R 10/R 11	R 12	R 12 / V 06			
			18	R 10/R 11	R 12	R 12 / V 06	R 13 / V 10		
		Beige	15	R 10/R 11	R 12	R 12 / V 06	R 13 / V 08		
			18	R 10/R 11	R 12	R 12 / V 06		R 13 / V 10	
		Light grey	15	R 10/R 11	R 12	R 12 / V 06	R 13 / V 08		
			18	R 10/R 11	R 12	R 12 / V 06		R 13 / V 10	
		Dark grey	15	R 10/R 11	R 12	R 12 / V 06			
			18	R 10/R 11	R 12	R 12 / V 06			
		Titanium grey	15	R 10/R 11	R 12	R 12 / V 06			
			18	R 10/R 11	R 12	R 12 / V 06			
		Cream yellow	15	R 10/R 11	R 12	R 12 / V 06			
			18	R 10/R 11	R 12	R 12 / V 06			
		Sand yellow	15	R 10/R 11	R 12	R 12 / V 06			
			18	R 10/R 11	R 12	R 12 / V 06			
		Anthracite	15	R 10/R 11	R 12	R 12 / V 06			
			18	R 10/R 11	R 12	R 12 / V 06			
		Rectangular *240 x 115	Sand yellow	15	R 10/R 11				
				18	R 10/R 11				



Arkona white



Beige



Light grey



Dark grey



Titanium grey



Cream yellow



Sand yellow



Anthracite

FINE GRAINED

Additional colours/formats available upon request.

*Limited special order availability in other colours.

In principle all formats can be installed with conventional (thin set, et al) installation methods.

Material requirements table	Format	Thickness	Material requirements* including joints Pieces per sqm	Contents Pieces/ Package	Contents qm/ Pallet	Weight in	
						kg/ sqm	kg/ Pallet
	198 x 98	15	50	26	31,20	32,5	1.014
		18	50	22	26,40	40	1.056
	240 x 115	15	33	26	35,45	31	1.099
		18	33	22	30,00	37	1.110

*Requirement with normal grouting. With a „groutless“ installation (Vibration) the requirement will increase slightly.

		Thickness	Smooth	Security	Nopped profile	Safety plus	
HEXALITH® SERIES	Hexagonal 108 x 125	Arkona white	15	R 10/R 11			
			18	R 10/R 11	R 12	R 12 / V 04	R 13 / V 10
		Beige	15	R 10/R 11			
			18	R 10/R 11	R 12	R 12 / V 04	R 13 / V 10
		Light grey	15	R 10/R 11			
			18	R 10/R 11	R 12	R 12 / V 04	R 13 / V 10
		Dark grey	15	R 10/R 11			
			18	R 10/R 11			
		Titanium grey	15	R 10/R 11			
			18	R 10/R 11			
		Anthracite	15	R 10/R 11			
			18	R 10/R 11			
		Cream yellow	15	R 10/R 11			
			18	R 10/R 11	R 12	R 12 / V 04	
		Sand yellow	15	R 10/R 11			
			18	R 10/R 11	R 12	R 12 / V 04	
		Grey porphy	15	R 10/R 11			
			18	R 10/R 11	R 12	R 12 / V 04	
		Atlanta	15	R 10/R 11			
			18	R 10/R 11	R 12	R 12 / V 04	

Additional colours/formats available upon request.



blunt finishing tile



point finishing tile

All Hexagonal tile can also be delivered with pre-cut pointed and blunt finishing tiles.



Arkona white



Beige



Light grey



Dark grey



Titanium grey



Anthracite



Cream yellow



Sand yellow



Grey porphy



Atlanta

Material requirements table	Format	Thickness	Material requirements*	Contents Pieces/Package	Contents sqm/Pallet	Weight in	
			including joints Pieces per sqm			kg/sqm	kg/Pallet
	108 x 125	15	97,5	48	31,01	35,20	1.092
		18	96,5	40	26,11	41,30	1.079

*Requirement with normal grouting. With a „groutless“ installation (Vibration) the requirement will increase slightly.

		Thickness	Smooth
Rectangular 398 x 198	Anthracite	15	R 9/R 10/R 11
	Light grey	15	R 9/R 10/R 11

Additional colours/formats available upon request.



Anthracite

Light grey

FINE GRAINED

		Thickness	Smooth	Nopped profile
Square 298 x 298	Cora	12 / 15	R 9/R 10	
	Gitta	12 / 15	R 9/R 10	
	Miha	12 / 15	R 9/R 10	
	Katerina	12 / 15	R 9/R 10	
	Dehner	12 / 15	R 9/R 10	
	Alisa	12 / 15	R 9/R 10	
	Tina	12 / 15	R 9/R 10	

Additional colours/formats available upon request.



Tina

Cora

Miha



Tessa

Gitta

Katerina

COARSE GRAINED

		Thickness	Smooth	Nopped profile
Square 398 x 398	Anthracite	12 / 15	R 9/R 10/R 11	
	Light grey	12 / 15	R 9/R 10/R 11	
	Miha	15	R 9/R 10	

Additional colours/formats available upon request.



Dehner

		Thickness	Slip Resistance
398 x 198	Galaxyit	15	R 9/R 10
	Galaxyit	15	R 9/R 10

Additional colours/formats available upon request.



Galaxyit



Galaxyit

DEKORTEC

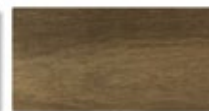
		Thickness	Slip Resistance
398 x 198	Larch	15	R 10
	Oak Wood	15	R 10
	Walnut	15	R 10

Additional colours/formats available upon request.

New!



Larch



Oak Wood



Walnut

WOOD DESIGN

Material requirements table	Format	Thickness	Material requirements* including joints Pieces per sqm	Contents Pieces/ Package	Contents sqm/ Pallet	Weight in kg/ sqm	kg/ Pallet
	198 x 98	15	50	26	31,20	32,5	1.014
	198 x 198	15	25	13	31,20	33,5	1.045
	298 x 298	12	11	11	40,00	27,5	1.100
		14	11	10	36,36	32	1.163
		15	11	9	32,73	33	1.080
	398 x 198	15	12,5	9	34,56	34	1.175

*Requirement with normal grouting. With a „groutless“ installation (Vibration) the requirement will increase slightly.

Stair tread tiles, rounded front with grooves		Thickness	Slip Resistance	Material requirements including joints Pieces/linear m	Contents Pieces/ Package	Contents linear m/ Pallet	Weight in kg/ linear m kg/ Pallet	
298 x 198	Light grey	15	R 10/R 11	5	10	72,00	10	720
	Dark grey	15	R 10/R 11	5	10	72,00	10	720
298 x 298	Light grey	12 *	R 9 **	3,33	11	132,13	8,5	1.023
	Beige	12 *	R 9 **	3,33	11	132,13	8,5	1.023
	Dark grey	12 *	R 9 **	3,33	11	132,13	8,5	1.023
	Titanium grey	12 *	R 9 **	3,33	11	132,13	8,5	1.023
	Anthracite	12 *	R 9 **	3,33	11	132,13	8,5	1.023
398 x 198	Galaxyit	15	R 9/R 10	5	9	86,40	14	1.209
398 x 398	Light grey							
	Anthracite							
	Miha							

* also available in 15 mm thickness

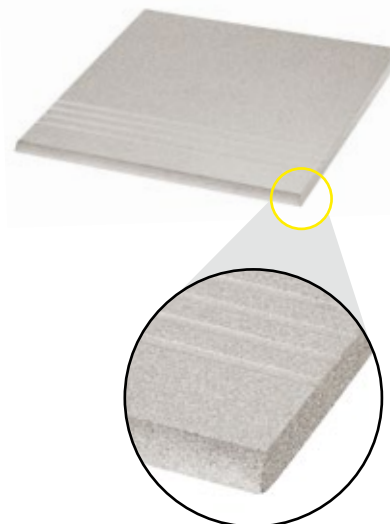
** More surfaces available upon request / Stair tread tile in coarse grain upon request.

Strip tile

Strip tile		Thickness	Material requirements including joints Pieces/linear m	Contents Pieces/ Package	Contents linear m/ Pallet	Weight in kg/ linear m kg/ Pallet	
298 x 72 rounded	Light grey	12	3,33	28	538,14	1,90	1.022
	Beige	12	3,33	28	538,14	1,90	1.022
	Dark grey	12	3,33	28	538,14	1,90	1.022
	Titanium grey	12	3,33	28	538,14	1,90	1.022
	Anthracite	12	3,33	28	538,14	1,90	1.022
	Cora	15	3,33	21	378,38	2,63	995
	Gitta	15	3,33	21	378,38	2,63	995
	Miha	15	3,33	21	378,38	2,63	995
	Katerina	15	3,33	21	378,38	2,63	995
	Galaxyit	15	3,33	21	378,38	2,63	995
398 x 72	Light grey	15	2,50	15	288	2,60	750
	Dark grey	15	2,50	15	288	2,60	750
	Titanium grey	15	2,50	15	288	2,60	750
	Anthracite	15	2,50	15	288	2,60	750
	Galaxyit	15	2,50	15	288	2,60	750
	Miha						



Stair tread



Strip tile

Coved base skirting

		Thickness	Material	Contents Pieces/Package	Contents linear m/Pallet	Weight in	
			requirements including joints Pieces/linear m			kg/linear m	kg/Pallet
198 x 110	Light grey	10	5	25	375	2,56	960,0
	Arkona white	10	5	25	375	2,56	960,0
	Beige	10	5	25	375	2,56	960,0
	Dark grey	10	5	25	375	2,56	960,0
	Titanium grey	10	5	25	375	2,56	960,0
	Cream yellow	10	5	25	375	2,56	960,0
	Sand yellow	10	5	25	375	2,56	960,0
	Anthracite	10	5	25	375	2,56	960,0
	Grey porphyr	10	5	25	375	2,56	960,0
	Atlanta	10	5	25	375	2,56	960,0
	Light grey	15	5	15	225	3,70	832
	Arkona white	15	5	15	225	3,70	832
	Beige	15	5	15	225	3,70	832
	Dark grey	15	5	15	225	3,70	832
	Titanium grey	15	5	15	225	3,70	832
	Cream yellow	15	5	15	225	3,70	832
	Sand yellow	15	5	15	225	3,70	832
	Anthracite	15	5	15	225	3,70	832
	Light grey	18	5	15	180	4,50	810
	Arkona white	18	5	15	180	4,50	810
	Beige	18	5	15	180	4,50	810
	Dark grey	18	5	15	180	4,50	810
	Titanium grey	18	5	15	180	4,50	810
	Cream yellow	18	5	15	180	4,50	810
	Sand yellow	18	5	15	180	4,50	810
	Anthracite	18	5	15	180	4,50	810
	Grey porphyr	18	5	15	180	4,50	810
	Atlanta	18	5	15	180	4,50	810



Coved base skirting

Additional colours/formats available upon request.

Information subject to change.

Internal right angle covered based skirting / External right angle covered based skirting

Arkona white
Light grey
Beige
Dark grey
Titanium grey
Cream yellow
Sand yellow
Anthracite
Grey porphyr
Atlanta

Material requirements: Pair



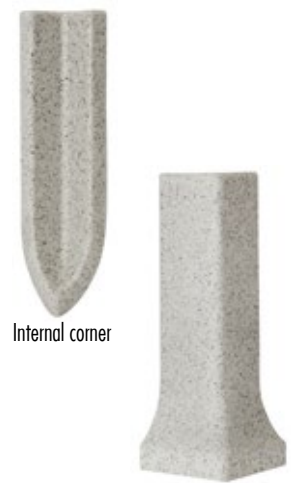
Internal right angle covered based skirting

External right angle covered based skirting

Internal corners/ External corners

Arkona white
Light grey
Beige
Dark grey
Titanium grey
Cream yellow
Sand yellow
Anthracite
Grey porphyr
Atlanta

Material requirements: Pieces



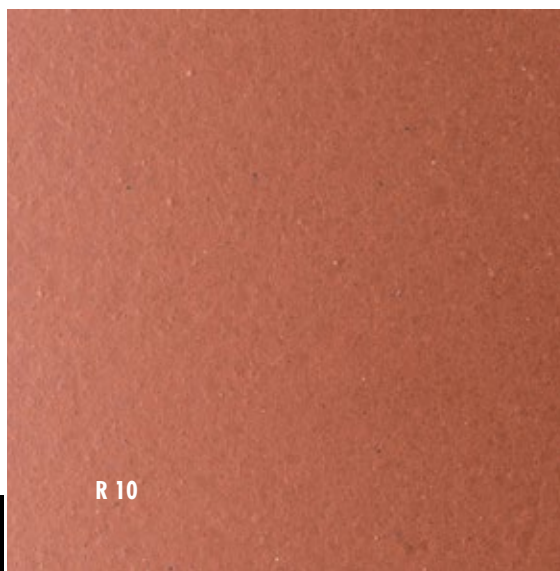
Internal corner

External corner

		Thickness	Smooth	Security	Nopped profile
Rectangular 198 x 98	Brick red	16	R 10/R 11	R 12	R 12 / V 06
		20	R 10/R 11	R 12	R 12 / V 06
	Blue red- flamed	16	R 10		
		20	R 10		
Rectangular 240 x 115	Brick red	16	R 10/R 11	R 12	
		20	R 10/R 11	R 12	R 12 / V 06
		25	R 10		
	Blue-red- flamed	16	R 10		
		20	R 10		
Sharp edged	Brick red	30	R 10		

Material requirements table	Format	Thickness	Material requirements*	Contents Pieces/ Package	Contents sqm/ Pallet	Weight in	
			including joints Pieces per sqm			kg/ sqm	kg/ Pallet
	198 x 98	16	50	16	35,84	36,5	1.308
		20	50	13	29,12	47,5	1.383
	240 x 115	16	33	16	34,91	36,5	1.274
		20	33	13	28,36	44,5	1.262
		25	33	11	24,00	56	1.344
	Sharp edged	30	33	9	19,64	67	1.316

*Requirement with normal grouting. With a „groutless“ installation (Vibration) the requirement will increase slightly.

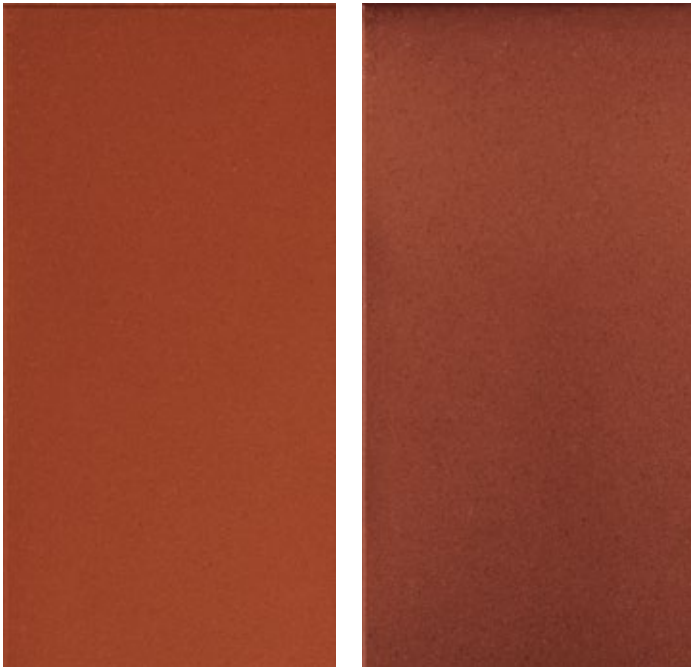


R 10



R 11

COLOURS



Brick red 110 Blue-red flamed 150

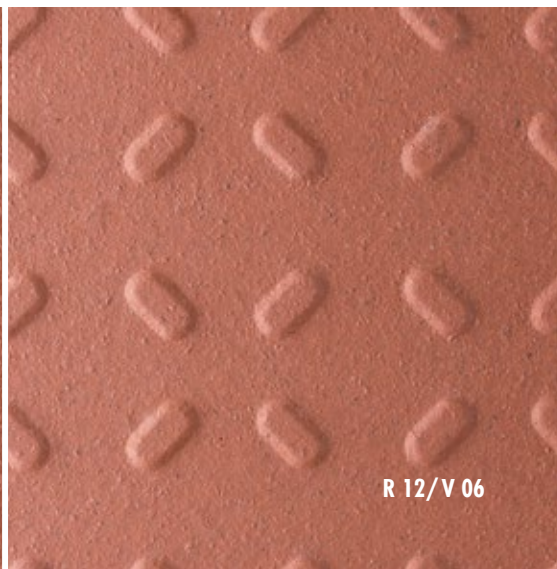
Colour aberration from original product may be caused by printing.



Reclay



R 12

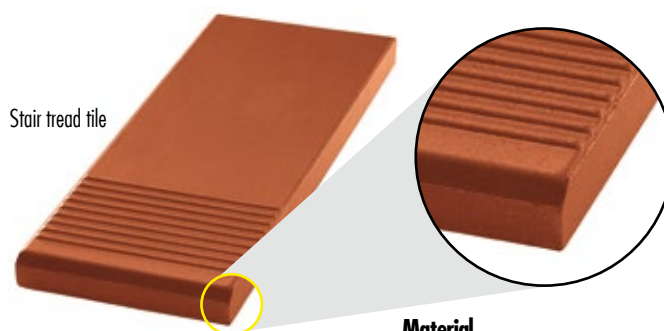


R 12/V 06

Window sill tile with drip nose		Thickness	Material requirements including joints		Contents Pieces/Package	Contents linear m/ Pallet	Weight in	
			Pieces/linear m	kg/linear m			kg/ Pallet	
198 x 98	Brick red	20		10	13	145,60	10,00	1.456
	Blue-red flamed	20		10	13	145,60	10,00	1.456
240 x 115	Brick red	20		8	13	117,00	11,00	1.278
	Blue-red flamed	20		8	13	117,00	11,00	1.278



Wall top covering rounded both sides with drip nose		Thickness	Material requirements including joints		Contents Pieces/Package	Contents linear m/ Pallet	Weight in	
			Pieces/linear m	kg/linear m			kg/ Pallet	
300 x 115	Brick red	20		8	10	97,50	14,00	1.365
	Blue-red flamed	20		8	10	97,50	14,00	1.365



Stair tread tile with drip nose		Thickness	Material requirements including joints		Contents Pieces/Package	Contents linear m/ Pallet	Weight in	
			Pieces/linear m	kg/linear m			kg/ Pallet	
300 x 115	Brick red	20		8	10	97,50	14,00	1.365
	Blue-red flamed	20		8	10	97,50	14,00	1.365

Strip tile

		Thickness	Material requirements including joints	Contents	Contents	Weight in	
			Pieces/linear m	Pieces/Package	linear m/ Pallet	kg/ linear m	kg/ Pallet
240 x 52	Brick red	12	4	22	858,00	1,60	1.372
	Blue-red flamed	12	4	22	858,00	1,60	1.372

Only in Special choice



Strip tile

Bullnose

		Thickness	Material requirements including joints	Contents	Contents	Weight in	
			Pieces/linear m	Pieces/Package	linear m/ Pallet	kg/ linear m	kg/ Pallet
240 x 115	Brick red	16	4	16	288,00	4,40	1.267

Only in Special choice



Bullnose

Coved base skirting

		Thickness	Material requirements including joints	Contents	Contents	Weight in	
			Pieces/linear m	Pieces/Package	linear m/ Pallet	kg/ linear m	kg/ Pallet
198 x 110	Brick red	10	5	25	375,00	2,56	960
	Brick red	15	5	15	225,00	3,70	832

Coved base skirting



Internal right angled covered base skirting / External right angled covered base skirting

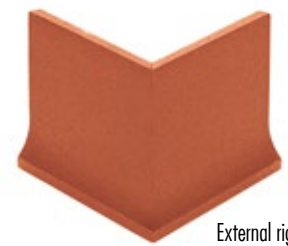
Brick red

Material requirements: Pair

Internal right angle covered based skirting



External right angle covered based skirting



Internal corners/ External corners

Brick red

Material requirements: Pieces

External corners



Internal corners

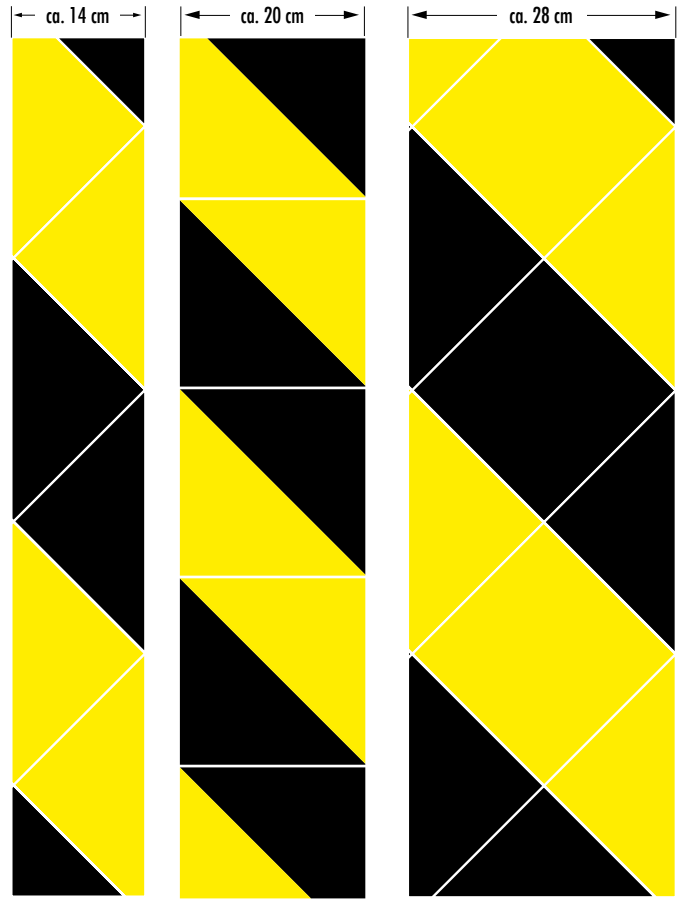




Stoneware manufactured by Argelith conforms to CE regulations.



Reclay



Kerasig in 15 mm thickness with the slip resistance R 12 V 06.

Possible installation width patterns

Material requirements table	Format	Thickness	Material requirements whole tiles	Material requirements half tiles	Surface
			linear m	linear m	
	ca. 14 cm	15 / 18		8	R 11
	ca. 20 cm	15 / 18		10	R 11
	ca. 28 cm	15 / 18	4	8	R 11



ARGENOL

The Cleaning Range for your Floor Coverings

ARGENOL

Cement Haze Remover

The cement haze remover and decalcifier for acid-resistant substrates, heavy building dirt and lime and jointing material residue (basic and post-construction cleaning).



10 / 20 / 200 liter

Designation	Item number	
Cement haze remover	10 l	00 99 19 00 400
Cement haze remover	20 l	00 99 19 00 401
Cement haze remover	200 l	00 99 19 00 402

Active Clean

Active Clean maintenance/shop floor cleaner for fine stoneware/porcelain, tiles and vitrified and semi-vitrified ceramic flooring: It removes stubborn old and new stains, the heaviest polymer soiling, wax and care product residue and much more.



10 / 20 / 200 liter

Designation	Item number	
Maintenance/shop floor cleaner	10 l	00 99 19 00 410
Maintenance/shop floor cleaner	20 l	00 99 19 00 411
Maintenance/shop floor cleaner	200 l	00 99 19 00 412

Clinker Oil

A special product for clinker tiles to penetrate them and to treat them. It contains high-quality oils and oil-like substances and is almost odorless and ready to use. Clinker oil soaks into the pores, strengthens the natural structure, brightens the color and makes the surfaces less susceptible to soiling.



10 / 20 / 200 liter

Designation	Item number	
Clinker oil	10 l	00 99 19 00 420
Clinker oil	20 l	00 99 19 00 421
Clinker oil	200 l	00 99 19 00 422



Number	Workplaces, workareas and operational traffic areas	Slip resistance Class (R-Group)	Displacement space with code for the minimum volume	Number	Workplaces, workareas and operational traffic areas	Slip resistance Class (R-Group)	Displacement space with code for the minimum volume
0	General work rooms and areas *)			5.6	Raw sausage department	R 13	V 6
0.1	Entrance area, inside **)	R 9		5.7	Drying room for sausages	R 12	
0.2	Entrance area, outside	R 11 or R 10	V 4	5.8	Entrail storage	R 12	
0.3	Stairways, inside ***)	R 9		5.9	Pickling and smoking room	R 12	
0.4	Stairways, outside	R 11 or R 10	V 4	5.10	Chicken processing	R 12	V 6
0.5	Inclined ramps ***) (for example wheelchair ramps access ramps, transport alleys)	One R-group higher than for access areas	V-value for access areas, if applicable	5.11	Cold Meat and packing department	R 12	
0.6	Sanitary rooms			5.12	Workshops	R 12	V 8****)
0.6.1	Toilets	R 9		6	Fish and Delicatessen processing		
0.6.2	Changing rooms, cleaning rooms	R 10		6.1	Fish processing	R 13	V 10
0.7	Break rooms (eg lounge, cafeteria), first aid rooms and similar areas (see ASR A4.3)	R 9		6.2	Delicatessen processing	R 13	V 6
0.8		R 9		6.3	Mayonnaise processing	R 13	V 4
1	Manufacture of margarine, cooking fat, cooking oil			7	Vegetables processing		
1.1	Fat melting	R 13	V 6	7.1	Sauerkraut processing	R 13	V 6
1.2	Cooking oil refinery	R 13	V 4	7.2	Tinned vegetables processing	R 13	V 6
1.3	Manufacture and packing of margarine	R 12		7.3	Sterilisation rooms	R 11	
1.4	Manufacture and packing of cooking fat, bottling of cooking oil	R 12		7.4	Rooms in which vegetables are prepared for processing	R 12	V 4
2	Manufacture of milk and cheese			8	Wet rooms in food and beverage processing (unless noted)		
2.1	Manufacture of fresh milk and butter	R 12		8.1	Fermenting rooms	R 10	
2.2	Manufacture, storage and packing of cheese	R 11		8.2	Beverage bottling, fruit juice manufacture	R 11	
2.3	Manufacture of ice cream	R 12		9	Kitchens, dining rooms		
3	Manufacture of chocolate and confectionary			9.1	Kitchens (restaurants / hotel kitchens)	R 12	
3.1	Sugar digester house	R 12		9.2	Kitchens for retirement homes, daycare and sanatoriums	R 11	
3.2	Manufacture of cocoa	R 12		9.3	Kitchens in hospitals and clinics	R 12	
3.3	Manufacture of raw mix	R 11		9.4	Catering services	R 12	V 4
3.4	Manufacture of praline			9.5	Fast food / Convenience food	R 12	
4	Manufacture of pastries (bakeries, confectionery, long-life bakery products)			9.6	Thawing and warm-up kitchens	R 10	
4.1	Manufacture of pastry	R 11		9.7	Coffee and Tea kitchens, kitchens in B&B hotels, ward kitchens	R 10	
4.2	Rooms in which fat or fluid products are produced and handled	R 12		9.8	Sink-room		
4.3	Sink-room	R 12	V 4	9.8.1	Sink rooms for 9.1, 9.4, 9.5	R 12	V 4
5	Slaughter and Meat processing			9.8.2	Sink rooms for 9.2	R 11	
5.1	Slaughterhouse	R 13	V 10	9.8.3	Sink rooms for 9.3	R 12	
5.2	Tripe scalding room	R 13	V 10	9.9	Dining rooms / break room including transport areas	R 9	
5.3	Meat cutting room	R 13	V 8				
5.4	Sausage kitchen	R 13	V 8				
5.5	Boiled sausage department	R 13	V 8				

Number	Workplaces, workareas and operational traffic areas	Slip resistance Class (R-Group)	Displacement space with code for the minimum volume
10	Cold and freezer rooms		
10.1	for non-packed goods	R 12	
10.2	for packed goods	R 11	
11	Sales rooms		
11.1	Reception of meat		
11.1.1	for non-packed goods	R 11	
11.1.2	for packed goods	R 10	
11.2	Reception of fish	R 11	
11.3	Serving area for meat and sausages		
11.3.1	for unpackaged goods	R 11	
11.3.2	for packaged goods	R 10	
11.4	Access corridors for meat and sausage, ready packed materials	R 10	
11.5	Serving area for dairy products and delicatessen, nonpacked goods	R 10	
11.6	Serving area for fish		
11.6.1	for unpackaged goods	R 12	
11.6.2	for packaged goods	R 11	
11.7	Serving places, excl. 11.3 – 11.6	R 9	
11.8	Preparation rooms		
11.8.1	for meat processing, excl. no. 5	R 12	V 8
11.8.2	for meat manufacture, excl. no. 5	R 11	
11.9	Flower binding	R 11	
11.10	Sales areas with stationary ovens		
11.10.1	for producing pastries	R 11	
11.10.2	for crisp-up prefabricated pastries	R 10	
11.11	Sales areas for stationary deep fryers or grills	R 12	V 4
11.12	Sales rooms, customer rooms	R 9	
11.13	Preparation rooms of food for self-service areas	R 10	
11.14	Cashpoint and packing areas	R 9	
11.15	Outdoor sales areas	R 11 or R 10	V 4
12	Social and welfare service rooms		
12.1	Disinfection rooms (wet)	R 11	
12.2	Pre-cleaning for sterilisation	R 10	
12.3	Human waste rooms, outlet rooms,, unsanitary care rooms	R 10	
12.4	Autopsy rooms	R 10	
12.5	Bathrooms, water cure rooms, Fango treatments	R 11	
12.6	Washing rooms for Operations, cast rooms	R 10	
12.7	Sanitary rooms, ward bathrooms	R 10	
12.8	Rooms for medical diagnosis and therapy, massage rooms	R 9	
12.9	Operating rooms	R 9	
12.10	Wards with sickrooms and corridors	R 9	
12.11	Doctors' Offices, Day hospitals	R 9	
12.12	Pharmacies	R 9	
12.13	Laboratories	R 9	
12.14	Hair Salons	R 9	

Number	Workplaces, workareas and operational traffic areas	Slip resistance Class (R-Group)	Displacement space with code for the minimum volume
13	Laundries and Laundromats		
13.1	Areas with dishwashers, centrifuges and tunnel washers	R 9	
13.2	Rooms with washing machines, where clothes are handled dripping wet	R 11	
13.3	Ironing and pressing rooms	R 9	
14	Concentrated feed processing		
14.1	Provender manufacture	R 11	
14.2	Provender manufacture with fat and water	R 11	V 4
15	Leather production, textiles		
15.1	Wet working areas in a tannery	R 13	
15.2	Room with fleshing machine	R 13	V 10
15.3	Room with leather waste	R 13	V 10
15.4	Room for production of fat based proofing	R 12	
15.5	Fabric dyeing in textile production	R 11	
16	Painting		
16.1	Wet polishing areas	R 12	V 10
16.2	Powdercoating	R 11	
16.3	Painting	R 10	
17	Ceramics industry		
17.1	Wet milling (processing of ceramic raw materials)	R 11	
17.2	Mixing Handling of materials such as tar, pitch, graphite or resins	R 11	V 6
17.3	Pressing (moulding) Handling of materials such as tar, pitch, graphite or resins	R 11	V 6
17.4	Casting areas	R 12	
17.5	Glazing areas	R 12	
18	Glass and stone processing		
18.1	Stone sawing and grindery	R 11	
18.2	Glass forming for hollow (container) glass	R 11	
18.3	Grindery for glass	R 11	
18.4	Manufacture of insulated glass Handling of granulates	R 11	V 6
18.5	Packing and Shipping of flat glass, Handling of separating agents	R 11	V 6
18.6	Etching plants for glass	R11	

SLIP RESISTANCE

Number	Workplaces, workareas and operational traffic areas	Slip resistance Class (R-Group)	Displacement space with code for the minimum volume
19	Concrete production		
19.1	Concrete washing areas	R 11	
20	Store rooms		
20.1	Store rooms for oil and fat	R 12	V 6
20.2	Store rooms for packed grocery	R 10	
20.3	Outdoor store rooms	R 11 or R 10	V 4
21	Chemical and thermal treatment of metals		
21.1	Pickling shop	R 12	
21.2	Hardening shop	R 12	
21.3	Laboratory	R 11	
22	Metal treatment, workshops		
22.1	Galvanising rooms	R 12	
22.2	Cast iron handling areas	R 11	V 4
22.3	Mechanical work areas (for example turning shop or milling shop), punching shop, pressing shop, drawing shop, and all areas with increased oil lubrication requirements	R 11	V 4
22.4	Parts cleaning areas, areas with waste steam	R 12	
23	Service Workshops for motor vehicles		
23.1	Service rooms	R 11	
23.2	Pits	R 12	V 4
23.3	Car Wash	R 11	V 4
24	Service rooms for airplanes		
24.1	Hangars	R 11	
24.2	Dockyards	R 12	
24.3	Wash area	R 11	V 4
25	Sewage Plants		
25.1	Pump rooms	R 12	
25.2	Sludge dehydration rooms	R 12	
25.3	Raking rooms	R 12	
25.4	Store rooms for service and maintenance platforms	R 12	
26	Fire stations		
26.1	Garages for vehicles	R 12	
26.2	Rooms for tube maintenance	R 12	
27	Breathing exercise area for Fire departments		
27.1	Preparation room	R 10	
27.2	Conditioning room	R 10	
27.3	Practice room	R 11	
27.4	Sluice	R 10	
27.5	Finish area	R 11	
27.6	Recovery room	R 11	
27.7	Control room	R 9	

Number	Workplaces, workareas and operational traffic areas	Slip resistance Class (R-Group)	Displacement space with code for the minimum volume
28	Schools and playschools		
28.1	Entrances, corridors, break halls	R 9	
28.2	Classrooms, meeting rooms	R 9	
28.3	Stairways	R 9	
28.4	Toilets, wash rooms	R 10	
28.5	Teaching kitchens (see no. 9)	R 10	
28.6	Kitchens in kindergartens (see no. 9)	R 10	
28.7	Machine rooms for wood working	R 10	
28.8	Special rooms for crafts / handwork	R 10	
28.9	Schoolyards	R 11 or R 10	V 4
29	Financial institutions		
29.1	Circuit breaker room	R 9	
30	Industrial traffic routes in outdoor areas		
30.1	Walkways	R 11 or R 10	V 4
30.2	Loading docks		
30.2.1	Roofed	R 11 or R 10	V 4
30.2.2	Not roofed	R 12 or R 11	V 4
30.3	Inclined ramps (eg wheel chairs, loading ramps)	R 12 or R 11	
30.4.1	Refuelling area, roofed	R 11	
30.4.2	Refuelling area, not roofed	R 12	
31	Parking areas		
31.1	Garages, multi-storey car park, underground garage protected from outside weather*****)	R 10	
31.2	Garages, multi-storey car park, underground garage not protected from outside weather	R 11 or R 10	V 4
31.3	Outdoor parking areas	R 11 or R 10	V 4

*) For floors in wet areas walked on barefoot, see GUV information flooring for wet barefoot areas (GUV-1 8527)

**) Entrance areas according to number 0.1 are areas which are accessed through entrances directly from the outside and can be carried into the moisture from the outside (See also point 6, paragraph 3, use of wastewater and Moisture transducer). For adjoining areas or other large areas please take notice of point 4, note 10.

***) Stairs ramps under point 0.3 and 0.5 are those that can be carried in the moisture from the outside. For adjoining areas point 4 para. Note 10.

****) In such case that all areas will have the same the same floor installed, it might be that based on risk assesment (taking into account the cleaning process, slip and fall risks, and the materials from process) all floors can be adjusted to V04.

*****) The pedestrian areas which are not affected by risk of slipping due to weather conditions such as rain or entrained moisture

Example of use:

The work area 6.3, mayonnaise processing, is assessed as having a slip resistance requirement of R13. The minimum displacement volume for the floor is rated V04, meaning a minimum of 4 cm³/dm². When selecting a suitable floor covering take into account the operating conditions of the individual cases, coverings can be included in the analysis, which have been certified by testing the following properties:

Slip resistance	Displacement area
R 13	V 4
R 13	V 6
R 13	V 8
R 13	V 10



Safety first

Always stay on safe ground

Argelith has proven to be the right choice for industrial floors requiring resistance to thermal, chemical mechanical and other stresses. As the graph shows Argelith keeps you on the safe side. Argelith tiles meet and exceed both requirements and norms for industrial floors.

Security:

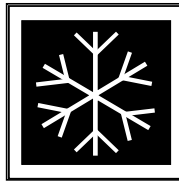
Stoneware and clinker tiles meet the key requirements in the high load areas of industry and commerce. And they always exceed the required standards!



Slip resistant
Argelith meets the requirements for all areas of application. (R10-R13 and V04-V10)



Chemical resistant
Argelith tiles are unglazed and oil, acid and alkali resistant



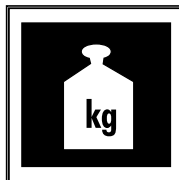
Frost resistant
Argelith tiles do not crack, even in low temperatures and at thermal shocks



mvtec® stoneware tile
The extreme density prevents water and moisture from penetrating. This helps achieve maximum stain resistance.



Ecologically sound
Only natural materials with no chemical additives are used



Maximum load bearing
Argelith products are inherently elastic and can withstand high pressure

Protect your people and the environment

It is important, as well as possibly legally required, that the environment should not be damaged. Whether exposed to oils, fats, alkalis, acids or other dangerous substances a floor of Argelith tiles ensures that the required standards can be met!

Technical values:

tested according to DIN EN ISO 10545 Section 1-16

Argelith fine porcelain stoneware tiles comply in all tested properties with the requirements of the material Norm DIN EN 14411, Section G, Group B I and UGL.

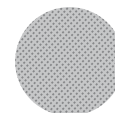
	Example: Hexagonal 108 x 125 x 18 mm	Requirement according to DIN EN 14411	Argelith Bodenkeramik
STONEWARE	Modulus of rupture N/mm ² and average breaking strength in N	min. 35 N/mm ²	ca. 73,3 ± 4,1 ca. 15289 ± 911
	Resistance against deep wear	max. 175 mm ³	ca. 100 mm ³
	Water absorption in weight - %	max. 0,5 %	< 0,05 %

The above values are an extract from a test certificate. We will happily send you a test certificate for your desired material.

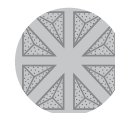
Surfaces:



Smooth
R 9 - R 10 - R 11



Security
R 12



Nopped/Star
R 12/V 06
R 13/V 08



Safety Plus
R 13/V 10

Technical values:

tested according to DIN EN ISO 10545 Section 1-16

Argelith clinker tiles comply in all tested properties with the requirements of the material Norm DIN EN 14411, Section G, Group B I and UGL.

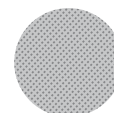
	Example: Brick red 198 x 98 x 16 mm	Requirement according to DIN EN 14411	Argelith Bodenkeramik
CLINKER TILES	Modulus of rupture N/mm ² and average breaking strength in N	min. 30 N/mm ²	ca. 34,9 ± 2,7 ca. 5006 ± 411
	Resistance against deep wear	max. 175 mm ³	ca. 154 mm ³
	Water absorption in weight - %	0,5 % < E < 3 %	< 2,01 %

The above values are an extract from a test certificate. We will happily send you a test certificate for your desired material.

Surfaces:



Smooth
R 10 - R 11



Security
R 12



Nopped profile
R 12/V 06

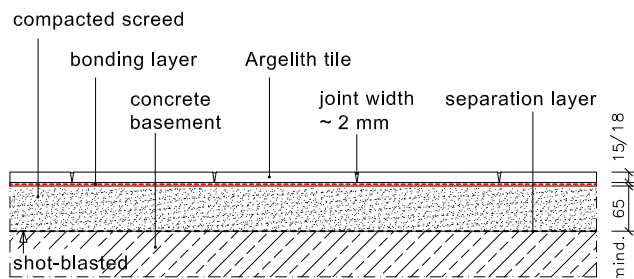
Floor structures

„Guidelines for the preparation of ceramic flooring using the vibration process“ AK QR (January 2015) describes the use of the vibration process for producing mechanically resistant and highly resilient ceramic floor cover designed especially for use on commercial and industrial premises.

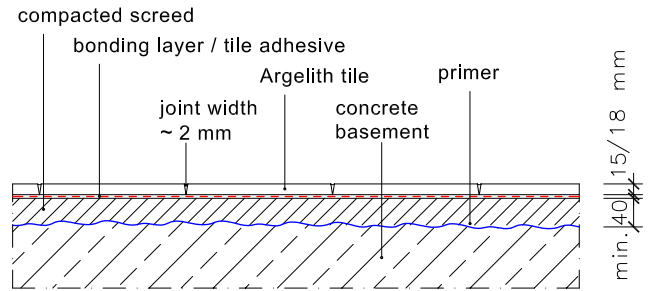
The design of the ceramic clad flooring surfaces can be made in direct connection with the supporting substructure, on separating layers or on insulation. The minimum thickness of underlay required for composite installations is 40 mm, on a separating layer 65 mm, and on insulation 85 mm.

The following detailed drawings illustrate the different configurations:

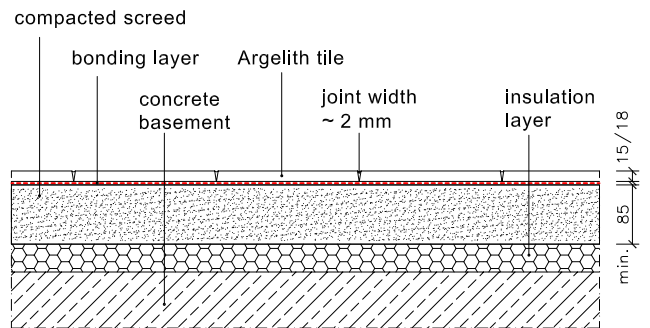
Floor structure on separation liner



Composite floor structures



Floor structure and insulating layer

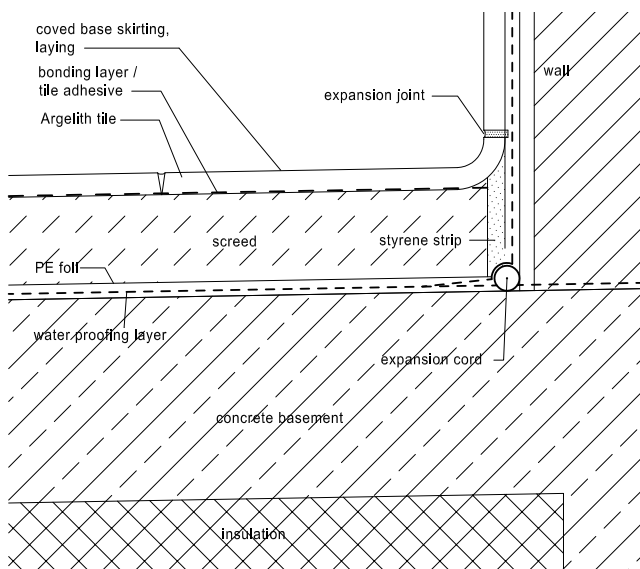


Cove base

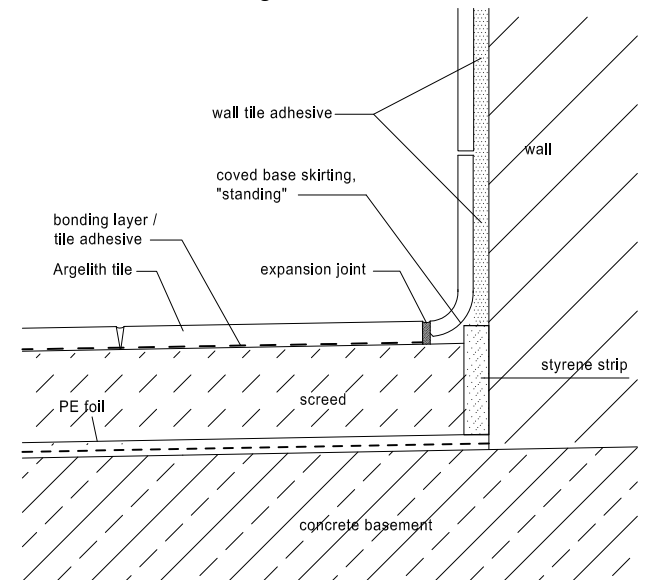
Coved skirting on transition from floor / wall covering is used primarily in wet rooms or areas that need to comply with hygiene standards (commercial kitchens, food industry, hospitals, etc.). Coved skirting is concave-rounded to allow more hygienic cleaning.

The detailed structure can be seen in the following two drawings:

Installation of horizontal coved skirting in a laundry facility



Vertical coved skirting





Argelith Bodenkeramik H. Bitter GmbH
Schledehauser Str. 133 · D-49152 Bad Essen
Tel. +49 (0) 54 72 / 40 20 · Fax +49 (0) 54 72 / 15 12
verkauf@argelith.com · www.argelith.com

Produkt Range / 08 / 082017

